



PRINCIPAL PARTICULARS:

Year Built	: 2008
Length Overall	: 58.70 m
Breadth Moulded	: 14.60 m
Depth Moulded	: 5.50 m
Draft (Max)	: 4.50 m
GRT/NRT	: 1537/461
Class	: BV – Class 1, Hull, Mach, Tug, Supply
Flag (Port Registry)	: Singapore
Call Sign	: 9V7839
IMO #	: 9536545

PERFORMANCE:

Maximum Speed	: 13 knots
Economical Speed	: 10 knots
Fuel Consumption	: 19 m3/24 hours @ 100% MCR 12 m3/24 hours @ 85% MCR

CARGO CAPACITIES:

Deadweight	: 14350 mt
Deck Strength	: 7 mt/m2 uniform loading
Clear Deck Area	: 370 m2
Fuel Oil	: 721 m3
Fresh Water	: 264 m3
Ballast/Drill water	: 220 m3
Liquid Mud	: 255 m3
Cement Tank	: 187 m3 (4 x 1650 ft3)
Freezer/chiller	: 10 m3 / 10 m3
Foam / Detergent	: 13 m3 / 13 m3
Drill Water	: 226 m3

PUMPS:

Fuel Oil	: 1 x 150 m3/hr @ 75m head
Fresh Water	: 1 x 100 m3/hr @ 75m head
SWB/Drill Water	: 1 x 100 m3/hr @ 75m head
Liquid Mud	: 2 x 70 m3/hr @ 75 head
Bilge/Ballast/Pump	: 2 x 75 m3/hr @ 40m head
GS/ Fire Pump	: 1 x 75 m3/hr @ 40m head
Bulk Cement	: 1 x 13 m3/min @80 psi air compressors
Oil Dispersant System	: 2 x 6 m booms c/w 6 nozzles each

TOWING & ANCHOR HANDLING EQUIPMENT:

Bollard Pull	: 65 mt
Anchor Windlass	: 1 x electro-hydraulic Mentrade
Gypsies	: suit for 40mm (Ø) chains rated pull 9mt @ 12 m/min
Warping Drum	: 40 mm (dia) x 450 mm (L) rated pull 2 mt @ 10 m/min
Bow Anchors	: 2 x 1305 kg HHP anchors
Anchor chain	: 220 m (L) x 40 mm (dia) Grade U2 (each side)
Capstan	: 2 x 5 mt @ 15m/min electro hydraulic
Towing / AH Winch	: 1 electro-hydraulic double drum
Upper Drum cap (Tow)	: 1000m (L) x 56 mm (Ø) SWR
Lower drum Cap (AH)	: 1000m (10 X 56 MM (Ø) SWR

TOWING & ANCHOR HANDLING EQUIPMENT:

Line Pull	: 150 mt @ 6.0 m/min at 1 st layer 71 mt @ 12 m/min at 1 st layer 23.5 mt @ 36 m /min @ 1st layer
Tugger Winch	: 2 x 10 mt @ 15 m/min electro-hydraulic
Drum Capacity	: 200 m (L) x 22 mm (dia) SWR
Stall Pull	: 165 mt @ 1 st layer
Brake Capacity	: 200 mt static @ 1 st layer Remote Control from aft control stand in wheelhouse
Stern Roller	: 5.00 m (L) x 1.60 m (dia) SWL 200 mt
Shark Jaws	: 1 x electro hydraulic Karmfork - SWL 200 mt
Tow Pins	: 2 x electro hydraulic with turntable top flaps
Rope Reel	: 1 x electro hydraulic Men trade suit for 1000 m (L) x 56 mm (dia) SWR
Deck Crane	: 1 unit

PROPULSION SYSTEM:

Main Engines	: 2 x 1920 kw (2575 bhp) @ 1600rpm Cat 3516B
Main Generators	: 3 x 383 kw @ 1500 rpv / 415
Emergency Generator	: 1 x 65 kw @ 1800 rpm / 415V / 3Ph / 50Hz CAT.CA.4 DITA
Bow Thruster	: 1 x 325 kw electric driven Kawasaki KT- 72B1 tunnel type (CPP): 6T thrust
Steering Gear	: 2 x Kobelt; 4.3Tm; 35deg
Propulsion	: 2 x CPP in kort Nozzles: ZF
Rudders	: 2 x high performance streamline type

RADIO AND NAVIGATION EQUIPMENT:

GMDSS (Area 3)	: 1 x SSB
2 x Inmarsat C	: 2 x VHF Radio
1 x Navtex Receiver	: 2 x SART
1 x EPIRB	: 3 x Portable VHF Radios
2 x Radar	: 1 x Echo Sounder
1 x GPS	: 1 x Gyrocompass
1 x Autopilot	: 1 x Magnetic Compass
1 x Weather Fax	: 1 x Speed Log
1 x Wind Indicator	: 1 x AIS
Marine Technology Bridge Mate DP1	: Marine Technology JX Joystick
Vessel also fitted with Vingtor PA Talkbalk System @& Self Powered Telephones.	

ACCOMMODATION:

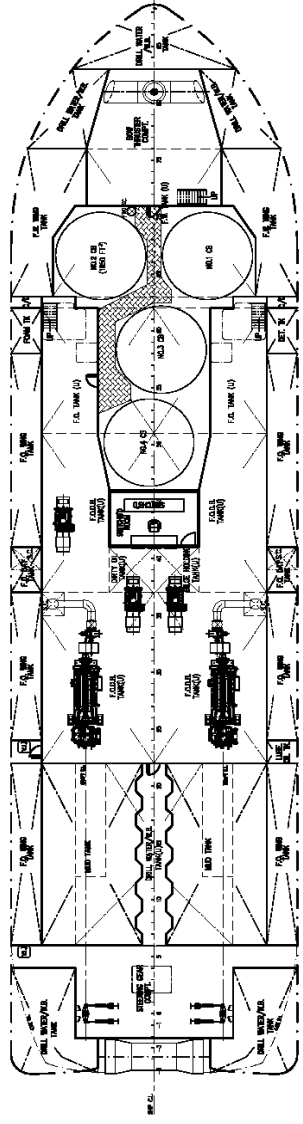
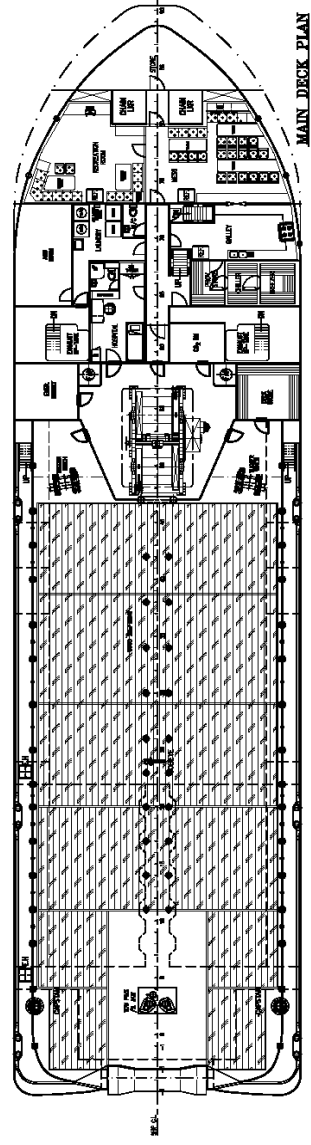
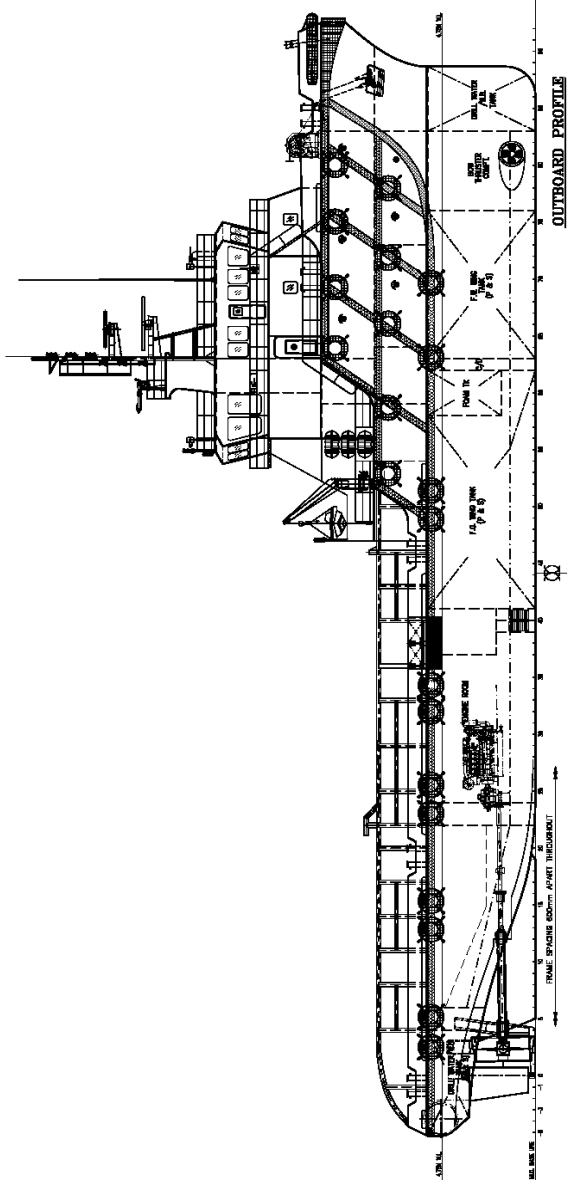
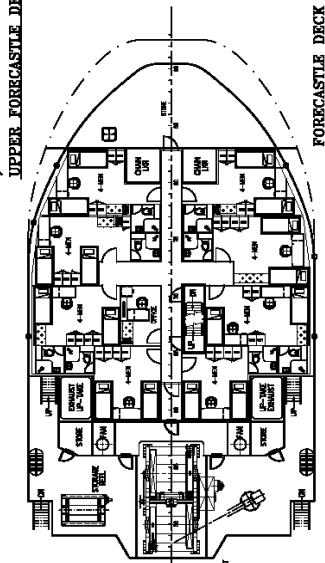
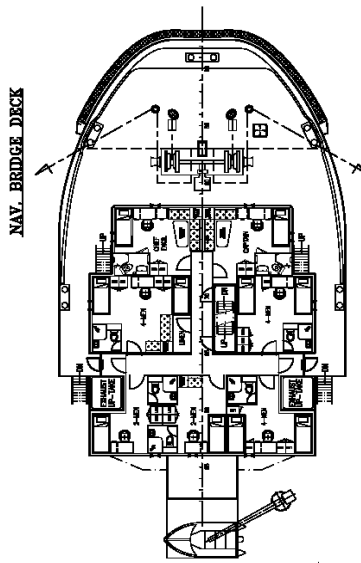
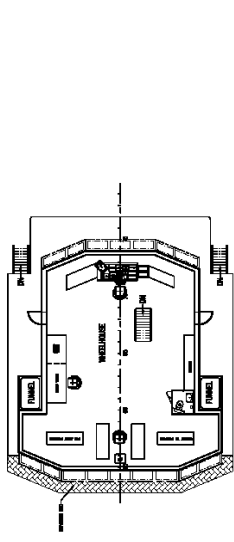
Berths	: 2 x 1 berth cabins = 2 2 x 2 berth cabins = 4 11 x 4 berth cabins= 44 Total = 50 men
Hospital	: 1 x 1x berth cabin = 1

MISCELLANEOUS:

Life Rafts	: 6 x 25 men SOLAS approved type
Rescue Boat	: 1 x 6 men inflatable c / w outboard motor
Oilly Water Separator	: 1 x 1 m3/hr c/w 15 ppm alarm
Water Maker	: 1 x 5 m3/day reverse Osmosis
Sewage Treatment	: 1 x 65 men

FIRE FIGHTING EQUIPMENT & ANTI-POLLUTION EQUIPMENT

FiFi System	: Class 1 with water curtain all around
Fire Pump	: 2 x 1500 m3/hr @ 13 bar, FFS driven by front PTO of M/E
Monitors – (water-Foam)	: 2 x 1200 m3/hr, FFS
Emergency Fire Pump	: 1 x 25 m3/hr @ 4.5 bar
BA Recharging Comp	: 1 x 75 ltrs/min @ 200 bar; CO2 system in engine room



PRINCIPAL DIMENSIONS

LENGTH OVERALL	58.70 M
LENGTH WATERLINE	56.37 M
LENGTH BETWEEN PERPENDICULARS	53.20 M
BREADTH MOULDED	14.60 M
DEPTH MOULDED	5.50 M
MAX. DRAFT MOULDED	4.75 M
ACCOMMODATION	50 MEN
FUEL OIL	715 M ³
FRESH WATER	284 M ³
MUD (S.G. = 2.5)	220 M ³
DRY BULK TANKS ⁴ x 1650 T ⁵ = 6800 T ⁶	187 M ³
CLEAR DECK AREA (DECK LOADING = 7 T/M ²)	375 M ²
TOTAL POWER	2 x 2575 BHP
BOLLARD PULL	60 TONNS
SPEED	13.5 KNOTS

1. FULL RAIL WITH/AIS LINK CHANGED TO AIS TANK	NO. 10-2-06
2. COMPLIANT WITH IACS CLASSIFICATION	NO. 10-2-06
3. COMPLIANT WITH IACS CLASSIFICATION	NO. 10-2-06
4. COMPLIANT WITH IACS CLASSIFICATION	NO. 10-2-06
5. COMPLIANT WITH IACS CLASSIFICATION	NO. 10-2-06
6. COMPLIANT WITH IACS CLASSIFICATION	NO. 10-2-06
7. COMPLIANT WITH IACS CLASSIFICATION	NO. 10-2-06
8. COMPLIANT WITH IACS CLASSIFICATION	NO. 10-2-06
9. COMPLIANT WITH IACS CLASSIFICATION	NO. 10-2-06
10. COMPLIANT WITH IACS CLASSIFICATION	NO. 10-2-06
11. COMPLIANT WITH IACS CLASSIFICATION	NO. 10-2-06
12. COMPLIANT WITH IACS CLASSIFICATION	NO. 10-2-06
13. COMPLIANT WITH IACS CLASSIFICATION	NO. 10-2-06
14. COMPLIANT WITH IACS CLASSIFICATION	NO. 10-2-06
15. COMPLIANT WITH IACS CLASSIFICATION	NO. 10-2-06
16. COMPLIANT WITH IACS CLASSIFICATION	NO. 10-2-06
17. COMPLIANT WITH IACS CLASSIFICATION	NO. 10-2-06
18. COMPLIANT WITH IACS CLASSIFICATION	NO. 10-2-06
19. COMPLIANT WITH IACS CLASSIFICATION	NO. 10-2-06
20. COMPLIANT WITH IACS CLASSIFICATION	NO. 10-2-06
21. COMPLIANT WITH IACS CLASSIFICATION	NO. 10-2-06
22. COMPLIANT WITH IACS CLASSIFICATION	NO. 10-2-06
23. COMPLIANT WITH IACS CLASSIFICATION	NO. 10-2-06
24. COMPLIANT WITH IACS CLASSIFICATION	NO. 10-2-06
25. COMPLIANT WITH IACS CLASSIFICATION	NO. 10-2-06
26. COMPLIANT WITH IACS CLASSIFICATION	NO. 10-2-06
27. COMPLIANT WITH IACS CLASSIFICATION	NO. 10-2-06
28. COMPLIANT WITH IACS CLASSIFICATION	NO. 10-2-06
29. COMPLIANT WITH IACS CLASSIFICATION	NO. 10-2-06
30. COMPLIANT WITH IACS CLASSIFICATION	NO. 10-2-06
31. COMPLIANT WITH IACS CLASSIFICATION	NO. 10-2-06
32. COMPLIANT WITH IACS CLASSIFICATION	NO. 10-2-06
33. COMPLIANT WITH IACS CLASSIFICATION	NO. 10-2-06
34. COMPLIANT WITH IACS CLASSIFICATION	NO. 10-2-06
35. COMPLIANT WITH IACS CLASSIFICATION	NO. 10-2-06
36. COMPLIANT WITH IACS CLASSIFICATION	NO. 10-2-06
37. COMPLIANT WITH IACS CLASSIFICATION	NO. 10-2-06
38. COMPLIANT WITH IACS CLASSIFICATION	NO. 10-2-06
39. COMPLIANT WITH IACS CLASSIFICATION	NO. 10-2-06
40. COMPLIANT WITH IACS CLASSIFICATION	NO. 10-2-06
41. COMPLIANT WITH IACS CLASSIFICATION	NO. 10-2-06
42. COMPLIANT WITH IACS CLASSIFICATION	NO. 10-2-06
43. COMPLIANT WITH IACS CLASSIFICATION	NO. 10-2-06
44. COMPLIANT WITH IACS CLASSIFICATION	NO. 10-2-06
45. COMPLIANT WITH IACS CLASSIFICATION	NO. 10-2-06
46. COMPLIANT WITH IACS CLASSIFICATION	NO. 10-2-06
47. COMPLIANT WITH IACS CLASSIFICATION	NO. 10-2-06
48. COMPLIANT WITH IACS CLASSIFICATION	NO. 10-2-06
49. COMPLIANT WITH IACS CLASSIFICATION	NO. 10-2-06
50. COMPLIANT WITH IACS CLASSIFICATION	NO. 10-2-06
51. COMPLIANT WITH IACS CLASSIFICATION	NO. 10-2-06
52. COMPLIANT WITH IACS CLASSIFICATION	NO. 10-2-06
53. COMPLIANT WITH IACS CLASSIFICATION	NO. 10-2-06
54. COMPLIANT WITH IACS CLASSIFICATION	NO. 10-2-06
55. COMPLIANT WITH IACS CLASSIFICATION	NO. 10-2-06
56. COMPLIANT WITH IACS CLASSIFICATION	NO. 10-2-06
57. COMPLIANT WITH IACS CLASSIFICATION	NO. 10-2-06
58. COMPLIANT WITH IACS CLASSIFICATION	NO. 10-2-06
59. COMPLIANT WITH IACS CLASSIFICATION	NO. 10-2-06
60. COMPLIANT WITH IACS CLASSIFICATION	NO. 10-2-06
61. COMPLIANT WITH IACS CLASSIFICATION	NO. 10-2-06
62. COMPLIANT WITH IACS CLASSIFICATION	NO. 10-2-06
63. COMPLIANT WITH IACS CLASSIFICATION	NO. 10-2-06
64. COMPLIANT WITH IACS CLASSIFICATION	NO. 10-2-06
65. COMPLIANT WITH IACS CLASSIFICATION	NO. 10-2-06
66. COMPLIANT WITH IACS CLASSIFICATION	NO. 10-2-06
67. COMPLIANT WITH IACS CLASSIFICATION	NO. 10-2-06
68. COMPLIANT WITH IACS CLASSIFICATION	NO. 10-2-06
69. COMPLIANT WITH IACS CLASSIFICATION	NO. 10-2-06
70. COMPLIANT WITH IACS CLASSIFICATION	NO. 10-2-06
71. COMPLIANT WITH IACS CLASSIFICATION	NO. 10-2-06
72. COMPLIANT WITH IACS CLASSIFICATION	NO. 10-2-06
73. COMPLIANT WITH IACS CLASSIFICATION	NO. 10-2-06
74. COMPLIANT WITH IACS CLASSIFICATION	NO. 10-2-06
75. COMPLIANT WITH IACS CLASSIFICATION	NO. 10-2-06
76. COMPLIANT WITH IACS CLASSIFICATION	NO. 10-2-06
77. COMPLIANT WITH IACS CLASSIFICATION	NO. 10-2-06
78. COMPLIANT WITH IACS CLASSIFICATION	NO. 10-2-06
79. COMPLIANT WITH IACS CLASSIFICATION	NO. 10-2-06
80. COMPLIANT WITH IACS CLASSIFICATION	NO. 10-2-06
81. COMPLIANT WITH IACS CLASSIFICATION	NO. 10-2-06
82. COMPLIANT WITH IACS CLASSIFICATION	NO. 10-2-06
83. COMPLIANT WITH IACS CLASSIFICATION	NO. 10-2-06
84. COMPLIANT WITH IACS CLASSIFICATION	NO. 10-2-06
85. COMPLIANT WITH IACS CLASSIFICATION	NO. 10-2-06
86. COMPLIANT WITH IACS CLASSIFICATION	NO. 10-2-06
87. COMPLIANT WITH IACS CLASSIFICATION	NO. 10-2-06
88. COMPLIANT WITH IACS CLASSIFICATION	NO. 10-2-06
89. COMPLIANT WITH IACS CLASSIFICATION	NO. 10-2-06
90. COMPLIANT WITH IACS CLASSIFICATION	NO. 10-2-06
91. COMPLIANT WITH IACS CLASSIFICATION	NO. 10-2-06
92. COMPLIANT WITH IACS CLASSIFICATION	NO. 10-2-06
93. COMPLIANT WITH IACS CLASSIFICATION	NO. 10-2-06
94. COMPLIANT WITH IACS CLASSIFICATION	NO. 10-2-06
95. COMPLIANT WITH IACS CLASSIFICATION	NO. 10-2-06
96. COMPLIANT WITH IACS CLASSIFICATION	NO. 10-2-06
97. COMPLIANT WITH IACS CLASSIFICATION	NO. 10-2-06
98. COMPLIANT WITH IACS CLASSIFICATION	NO. 10-2-06
99. COMPLIANT WITH IACS CLASSIFICATION	NO. 10-2-06
100. COMPLIANT WITH IACS CLASSIFICATION	NO. 10-2-06

KC KHAM CHUAN
MARINE PTE. LTD.
15, HILLVIEW TERRACE, SINGAPORE 669222
TEL: 67763343 (6 LINES) FAX: 67763348
E-MAIL: KCHAM@KHAMCHUAN.COM

58.7m ANCHOR HANDLING SUPPLY VESSEL

GENERAL ARRANGEMENT

CURSOR NO. BY: HIT62017/8
SCALE: 1:125
DRAWING NUMBER: KCM/Q383-G1
DATE: 13-07-07

THIS DOCUMENT AND THE INFORMATION IT CONTAINS IS
CLASSIFIED AS UNCLASSIFIED. IT IS TO BE OPENED
AND RELEASED TO THE PUBLIC BY THE NATIONAL
ARCHIVES AND RECORDS ADMINISTRATION IN ANY
MANNER DEEMED APPROPRIATE.